

INGREDIENT PORTFOLIO



innovacos

Synergizing ideas™

ACTIVE LINE

Biooptimized™ Guava

Senescence Response



INCI: Propanediol, Psidium Guajava Leaf Extract, Saccharomyces Lysate Extract

- Inflamm-aging response
- Inhibition of Senescence
- Prevention of signs of aging

ReGENESEAL™ LS

Cell rejuvenation | Epidermal reactivation



INCI: Glycerin, Water, Laminaria Saccharina Extract

- Chrono-aging response
- Cell rejuvenation
- Reverses the effect of aging

GinsenoLite™-G

Vital energy



INCI: Glycerin, Water, Panax Ginseng Root Extract

- Skin whitening
- No signs of toxicity on melanocytes
- Digital aging response (blue light protection)

Activoil™ Spotless ZRO

Skin luminescence



INCI: Ribes Nigrum (Black Currant) Seed Oil, Octyldodecanol, Octyldodecyl Oleate, Octyldodecyl Stearoyl Stearate, Paeonia Suffruticosa Root extract, Rosmarinus Officinalis (Rosemary) Leaf Extract

- Skin luminescence – youth gain of 20 years
- Prevention of age spot insurgence
- Reduction of age spot pigmentation

Activoil™ Echnidium ZRO

A solution against chemical stress



INCI: Echium Plantagineum Seed Oil, Octyldodecanol, Octyldodecyl Oleate, Octyldodecyl Stearoyl Stearate, Cnidium Monnieri Fruit Extract, Rosmarinus Officinalis (Rosemary) Leaf Extract

- Defence from chemical stress
- Deep skin detox solution
- Urban protection

Activoil™ Kerox-Pro™

Hair shield



INCI: Raphanus Sativus (Radish) Seed Extract, Octyldodecyl Oleate, Octyldodecanol, Magnolia Officinalis Bark Extract, Rosmarinus officinalis (Rosemary) Leaf Extract

- Hair shield
- Reduces UV-induced color fading
- Maintains cuticle ultrastructure integrity

Plant C•Stem™ Vigna radiata

A vacuolar extract of plant stem cells for sun damage repair



INCI: Glycerin, Water, Phaseolus Radiatus Meristem Cell Culture Extract

- Photo-aging response
- Rescue from sun damage (UV, blue light, IR protection)
- SPF booster activity

Plant C•Stem™ Bamboo

Hair Food



INCI: Glycerin, Water, Phyllostachys Pubescens Meristem Cell Lysate

- Reduction of hair loss
- Enhancement of hair density
- Hair anti-aging effect

FORMULIENCE™ LINE

PolyAqual™ 2W

Dermo-Biosystem™



INCI: Polyglyceryl-2 Stearate, Glyceryl Stearate, Stearyl Alcohol

- Polyglycerol-based O/W emulsifier
- Self-emulsifying
- Repairs skin barrier function
- Selective restoration of the cutaneous microflora

PolyAqual™ LW

Selective Collateral Matrix™



INCI: Polyglyceryl-4 Laurate, Polyglyceryl-6 Laurate

- Polyglycerol-based O/W emulsifier
- Cold processable
- Sprayable and fluid lotions

PolyAqual™ OS2

W/Oligomer™



INCI: Polyglyceryl-2 Oleate, Polyhydroxystearic Acid, Polyglyceryl-2 Stearate

- Polyglycerol-based W/O emulsifier
- Cold processable
- Unique skin feel

PolyAqual™ VO4

W+O Fusion™



INCI: Polyglyceryl-4 Oleate, Polyglyceryl-6 Oleate, Polyhydroxystearic Acid

- Polyglycerol-based W/O emulsifier
- New concept of W+O Fusion
- 100% vegetable oil-friendly

innollient™ LO

Of water and senses



INCI: Octyldodecyl Oleate, Octyldodecyl Stearoyl Stearate, Polyhydroxystearic Acid, Octyldodecanol

- Liquid dermo-emollient featured by high spreadability index
- Pigment dispersion
- Improvement in elasticity and skin barrier function

innollient™ SB

Sensorial Butter



INCI: Stearyl Stearate, Oleyl Oleate, Polyhydroxystearic Acid

- Soft past emollient
- Superior film-forming action
- Improvement in elasticity and skin barrier function

innollient™ SL

Hydrofeel™



INCI: Stearyl Stearate, Oleyl Oleate, Polyhydroxystearic Acid

- Soft emollient paste
- Film-forming effect
- Long lasting skin barrier action

Liceryl™-12

A functional approach to reduce skin irritation and protect skin barrier function



INCI: Glyceryl Linoleate, PEG-12 Oleate

- Solubilizer for clear gels
- Reduces surfactant irritation

Eceryl™-12

A functional approach to reduce skin irritation and protect skin barrier function



INCI: Glyceryl Erucate, PEG-12 Oleate

- Co-emulsifier, Solubilizer
- Maintains skin barrier function



An exclusive anti-aging active ingredient obtained from the bio-fermentation of Guava leaves from Jeju Island, South Korea. Senescent cells produce and secrete various molecules known as the Senescence Associated Secretory Phenotype (SASP) factors “toxifying” the skin tissue environment thus accelerating the age-dependent tissue disorganization. The production of SASP factors is under the control of the synthesis regulator NFkB that is itself rapidly activated as cells become senescent. By preventing the synthesis of SASPs, **Biooptimized™ Guava** prevents the appearance of early signs of aging and protects the skin from inflamm-aging. **Biooptimized™ Guava** is a key ingredient for all anti-aging formulations. It can be used as the main ingredient for a powerful anti-aging activity or in combination with “traditional” anti-aging active ingredients to boost their efficacy.

Efficacy

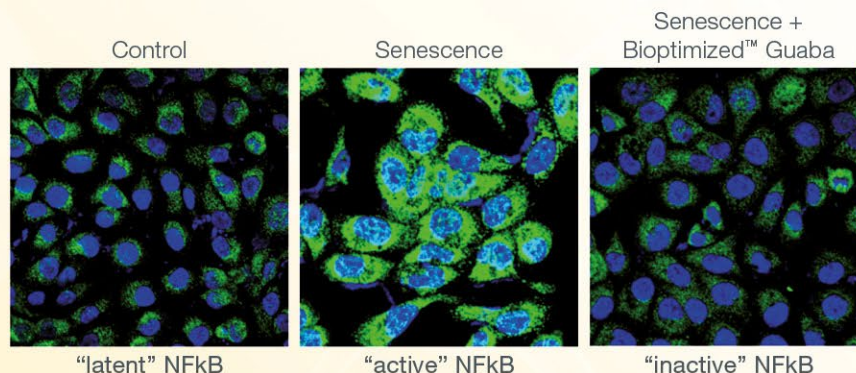
- Inhibition of NFkB activation (Biooptimized™ Guava blocks the degradation of the NFkB inhibitor, IκB and thus locks NFkB in an inactive configuration)
- Inhibition of Eotaxin, COX-2/PGE2, iNOS/Nitric oxide pathways
- Diminution of senescence-related chronic inflammation
- Reduction of age-related SASP side effects
- Reduction of skin damage induced by senescence
- Prevention of tissue disorganization caused by the aging process
- Increase in skin firmness and elasticity
- Decrease in wrinkle depth
- Protection against inflamm-aging
- Decrease in Physiological and UV-induced Skin Oxidative damage
- Anti-aging booster efficacy

Technical information

- **INCI:** Propanediol, Psidium Guajava Leaf Extract, Saccharomyces Lysate Extract
- Water soluble
- Preservative-free; made with non-GMO propanediol
- Recommended concentration 0.5-3%

Applications

- Anti aging
- Anti wrinkle
- Functional make-up





ReGENESEEA™ LS
Cell rejuvenation | Epidermal reactivation

ACTIVE LINE

Regenesea™-LS is a rejuvenating anti-aging active ingredient obtained from Laminaria saccharina. This marine alga is exposed to conditions of extreme cold along the Canadian coasts where it is harvested. Such environmental conditions endowing marine algae with biological properties concentrated in **Regenesea™-LS**. By increasing the gene expression of proteins involved in cell rejuvenation, this active ingredient can reverse the effects of aging ensuring deep and comprehensive protection from chrono-aging. **Regenesea™-LS** teaches old skin cells to behave like when they were young.

Efficacy

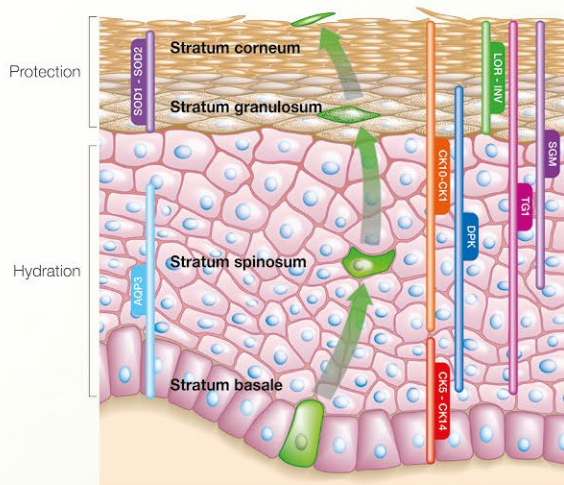
- Rejuvenation of aged cell gene expression
- Global action on the integrity of the extracellular matrix and DEJ
- Stimulation of keratinocyte differentiation and epidermal renewal
- Improvement of skin barrier function
- Increase in skin hydration
- Reduction of wrinkle density and volume
- Smoothing of skin texture
- Improvement of skin visco-elastic properties
- Inversion of chrono-aging

Technical information

- **INCI:** Glycerin, Water, Laminaria Saccharina Extract
- Water soluble
- Preservative-free
- Recommended concentration: 1-3%
- Purified by double-ultrafiltration

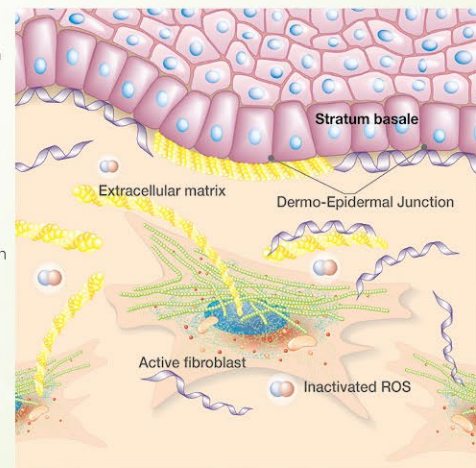
Applications

- Anti aging
- Anti wrinkle
- Functional make-up



Barrier function

Differentiation





GinsenoLite™-G

Vital energy

GinsenoLite™-G is derived from Korean ginseng enriched with the bioactive components ginsenosides. Ginsenosides possess a structure similar to that of plant polyphenols. **GinsenoLite™-G** is standardized based on the content of the ginsenoside Rb3. **GinsenoLite™-G** prevents skin melanocytes from producing and accumulating melanin pigments and was clinically shown to improve skin whitening. Thanks to its antioxidant properties, **GinsenoLite™-G** decreases the Reactive Oxygen Species (ROS), by protecting the skin from oxidative stress and dull complexion induced by blue light exposure.

Efficacy

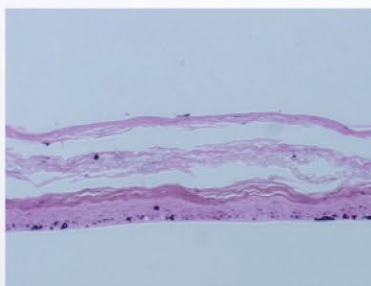
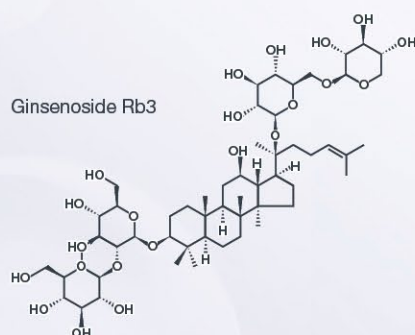
- Inhibition of tyrosinase activity
- Inhibition of melanogenesis
- Reduction of melanin pigmentation
- No signs of toxicity on melanocytes
- Significant skin whitening after 28 days
- Excellent clinical safety profile
- Digital aging protection - protection from oxidative damage caused by blue light

Technical information

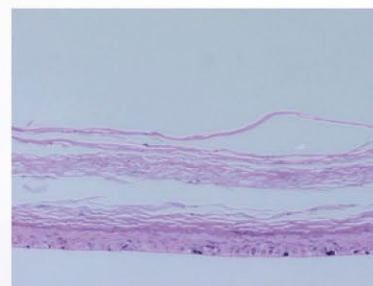
- **INCI:** Glycerin, Water, Panax Ginseng Root Extract
- Water soluble
- Preservative free
- Recommended concentration: 0.2-2%
- Panax ginseng fraction enriched in ginsenosides

Applications

- Skin care
- Skin whitening
- Depigmentation of sensitive areas



Control



GinsenoLite™-G 0.4%



Activoil™ Spotless ZRO is an active ingredient that preserves the luminescence and natural brightness of the skin over time. It is mainly composed of Black currant seed oil as the matrix enhanced with an antioxidant and a Paeonia (peony flowers) extract itself enriched in paeonol. Paeonia is widely known in Traditional Asian Medicine for its healing properties and is often called the King of flowers. All those 3 components are combined in a stabilized and highly functional liposoluble ingredient.

Efficacy

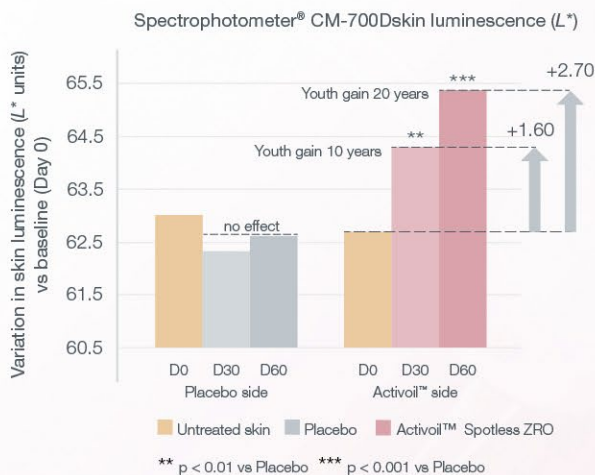
- Improvement of skin luminescence and brightness (L*)
- Youth gain of 10-20 years in skin luminescence
- Reduction of age spot pigmentation and color
- Prevention of UV-induced erythema
- Prevention of age spots insurgence

Technical information

- **INCI:** Ribes Nigrum (*Black Currant*) Seed Oil, Octyldodecanol, Octyldodecyl Oleate, Octyldodecyl Stearoyl Stearate, Paeonia Suffruticosa Root Extract, Rosmarinus Officinalis (*Rosemary*) Leaf Extract
- Oil soluble
- Recommended concentration: 0.5-3%
- Stabilized against oxidation

Applications

- Skin lightening
- Anti-aging
- Treatment for dyschromia
- Prevention of sun spots
- Functional make-up





Activoil™ Echnidium ZRO

A solution against chemical stress

Activoil™ Echnidium ZRO is an active ingredient that protects and repairs the skin from the harmful effects of chemical agents. It is made from 3 main components: Echium seed oil as the matrix enhanced with an antioxidant and an extract derived from Cnidium monnieri enriched in osthol. Echium seed oil is a rare source of stearidonic acid while Cnidium monnieri is a small red berry used in Traditional Chinese Medicine. All those 3 components are combined in a stabilized and ready-to-use ingredient.

Efficacy

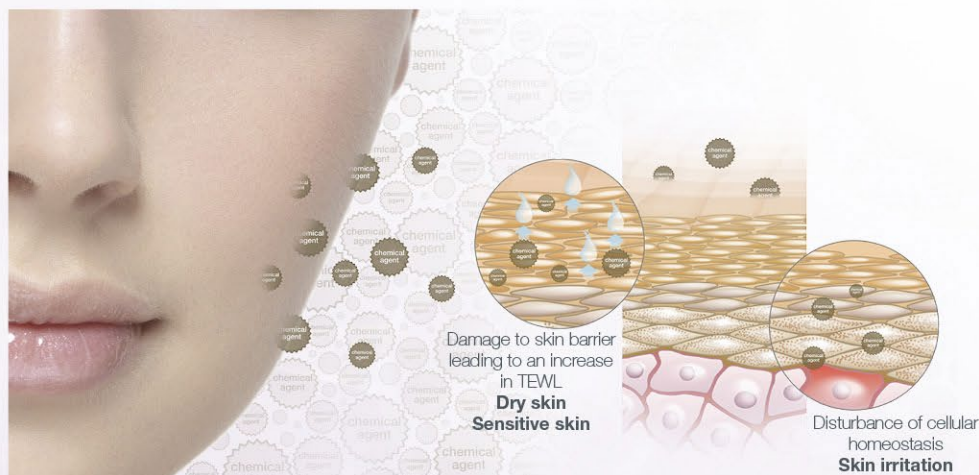
- Prevention and repair of damage to the skin barrier
- Acceleration of skin barrier recovery
- Prevention of skin irritation
- Decrease of skin sensitivity
- Relieve erythema
- Improvement of skin hydration level
- Improving physiological skin defence against chemical stress

Technical information

- **INCI:** Echium plantagineum Seed Oil, Octyldodecanol, Octyldodecyl Oleate, Octyldodecyl Stearoyl Stearate, Cnidium Monnieri Fruit Extract, Rosmarinus Officinalis (*Rosemary*) Leaf Extract
- Oil soluble
- Recommended concentration: 0.5-3%
- Stabilized against oxidation

Applications

- Sanitizing product
- Cleansing product
- Skin detox product



Efficacy

- ## Technical information

- ## Applications

-
- Cuticle**
- 5 to 10 overlapping scales of keratin
 - Most external layer of hair
 - Keratin: 1 cysteine - dimer of cysteine
- Cell Membrane Complex (CMC)**
- Cortex
 - 75% to 90% of the hair by weight
 - Contributes to the mechanical properties of the hair
 - Encloses melanin pigments
- 18-methyl eicosanoic acid**
- CCCCCCCCCCCCCCCCCC(=O)O
- Attached to cysteine
- Hydrophobic surface
 - Optical properties
 - Density decreases
 - with age
 - with weathering
- F-layer**
- Made of 18-methyl eicosanoic acid (18-MEA)
- Epicuticle**
- Outermost layer of the hair
 - Up to 30% cysteine
 - Connects with the F-layer
- CMC**
- Lipid matrix responsible for the adhesion between overlapping cuticles
- Fatty acids
 - Cholesterol
 - Ceramides
 - + 18-MEA (40% of FA)





Plant C-Stem™ *Vigna radiata*

A vacuolar extract of plant stem cells for sun damage repair

Plant C-Stem™ *Vigna radiata* is an active ingredient that counteracts photo-aging by offering a comprehensive protection against solar radiations (UV, blue light, infrared). **Plant C-Stem™ *Vigna radiata*** is a completely new concept of plant extraction. Plant cells contain a big vacuole they use as a warehouse to store bio-active components required for growth and repair. From plant cell cultures, we selectively extract the content of the intracellular vacuole without the use of solvent or enzyme. Using the plant cell vacuole extract is like using the plant “serum”.

Efficacy

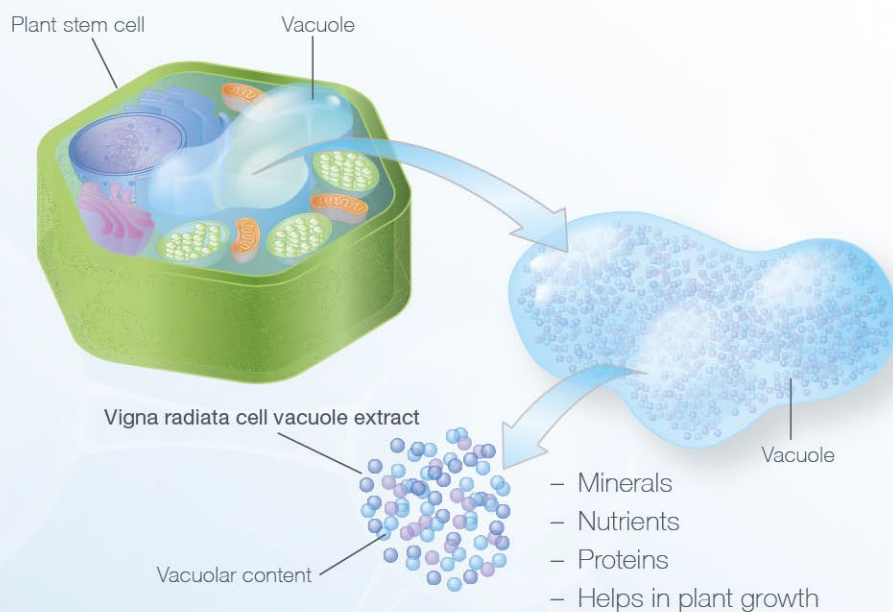
- Increase in cell viability upon UV exposure
- Reduction of UV-induced erythema
- Protection from oxidative damage caused by blue light and infrared exposure
- SPF booster activity
- Photo-aging protection

Technical information

- **INCI:** Glycerin, Water, Phaseolus Radiatus Meristem Cell Culture Extract
- Water soluble
- Preservative-free
- Recommended concentration: 0.2-2%

Applications

- Skin care
- Sun care
- After sun treatment
- Functional make-up





**Plant C-Stem™
Bamboo**
Hair Food

Plant C-Stem™ Bamboo is an active ingredient obtained from the vacuolar extract of meristematic cells of *Phyllostachys pubescens* to strengthen the hair and reduce its fall. *Phyllostachys pubescens* is the giant bamboo par excellence. In nature, it can reach 30 meters in height and 30 centimeters in diameter, with a daily growth of 1 meter. Bamboo is rich in silicon (Si), an essential component for hair health and beauty. Innovacos has harnessed the power of this plant to develop an ingredient with an essential role in the production of collagen, reduction of hair loss, and prevention of hair aging.

Efficacy

- Improvement in collagen synthesis
- Reduction in elastase activity
- Reduction in glycation
- Increase in HHFK (human hair follicle keratinocytes) and HFDPC (human hair follicle dermal papilla cells)
- Reduction in hair loss
- Increase in hair number

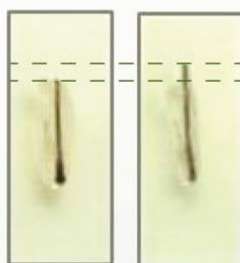
Technical information

- **INCI:** Glycerin, Water, *Phyllostachys Pubescens* Meristem Cell Lysate
- Water soluble
- Preservative-free
- Recommended concentration: 0.2-2%

Applications

- Reinforcing shampoo
- Energizing mask
- Anti-loss hair lotion
- Treatments for eyebrows and eyelashes

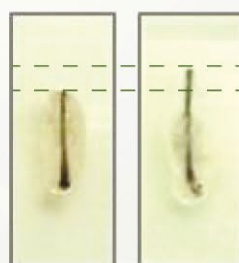
Plant C-Stem™ Bamboo
250 ppm



Day 0

Day 7

Plant C-Stem™ Bamboo
1000 ppm



Day 0

Day 7

Hair follicle pictures



PolyAqual™-2W is a patented O/W polyglycerol-based self-emulsifier that is all naturally derived. This emulsifier is Ecocert and Cosmos approved. **PolyAqual™-2W** possesses a wide range of formulation compatibility while providing a unique skin feel to emulsions. On a more functional level, **PolyAqual™-2W** can generate highly organized liquid crystals important to provide stability to the emulsion and to ensure compatibility with the skin. **PolyAqual™-2W** was shown to prevent and repair damage caused to the skin barrier function by UV exposure and to regulate the skin microbiota.

Technical information

- **INCI:** Polyglyceryl-2- Stearate, Glyceryl Stearate, Stearyl Alcohol
- O/W emulsions
- Self emulsifying wax, flakes
- Emulsion without co-emulsifier addition
- Can be added to the water phase or the oil phase of an emulsion
- HLB-independent
- Electrolyte tolerant
- Forms liquid crystals
- Compatible with various oils, esters and thickeners
- Recommended use level: 1-5%
- Wide range of pH (3-9)

Efficacy

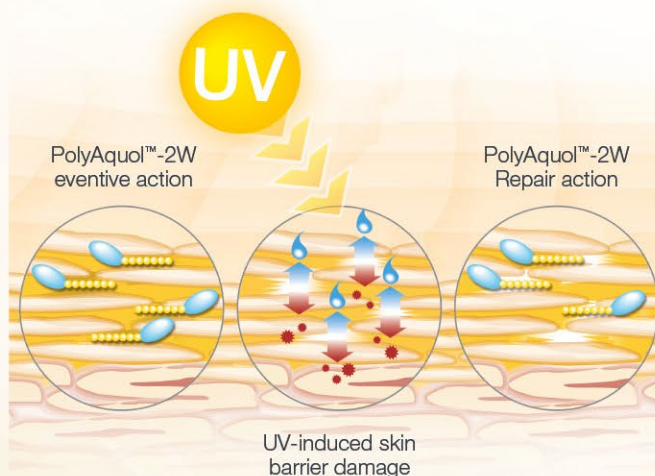
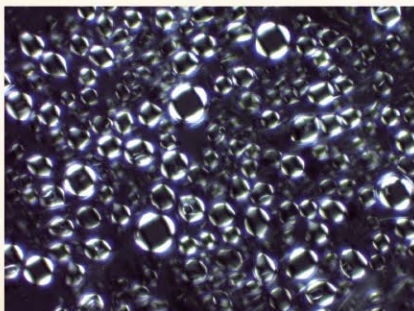
- Prevention of UV-induced damage to the skin barrier
- Repair of compromised skin barrier function
- Selective restoration of the cutaneous microflora

Applications

- Skin care
- Sun care
- Hair care
- Make-up

Clinical actions of PolyAqual™-2W on skin barrier function

Liquid crystals





PolyAqual™ LW

Selective Collateral Matrix™

The selection of highly purified polyglyceryl and fatty acid building blocks coupled to molecular engineering knowhow led to the creation of **PolyAqual™-LW** (patented). The key features of **PolyAqual™-LW** reside in its ability to form O/W emulsion in a cold-process environment while achieving very low levels of viscosity. It can be incorporated in the water phase or in the oil phase, independently. Those characteristics make **PolyAqual™-LW** perfectly suited for “one-pot” emulsions and also low-energy processes avoiding the use of heat or homogenization. Moreover, its Cosmos status and palm-free origin make it an ideal candidate for green formulations. Thanks to its molecular design, **PolyAqual™-LW** outperforms other emulsifiers with an apparent similar chemical composition.

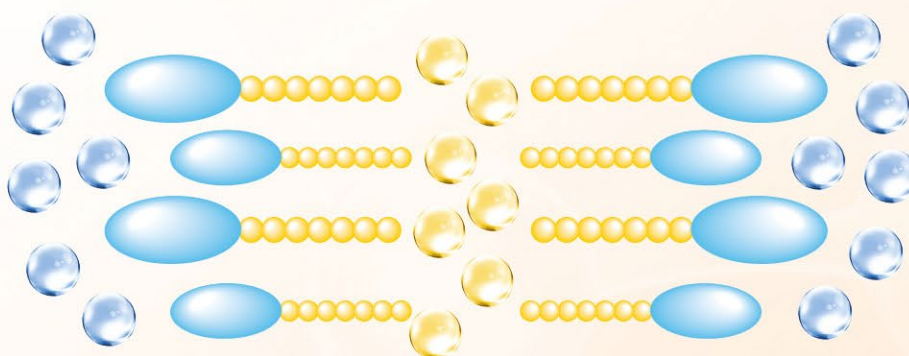
Technical information

- **INCI:** Polyglyceryl-4 Laurate, Polyglyceryl-6 Laurate
- Cold process O/W emulsions
- Viscous liquid
- Emulsion without co-emulsifier addition
- Ideal for low viscosity lotions and sprayable emulsions
- One-pot emulsions
- Compatible with lipid phase of different chemistry and polarity
- Compatible with synthetic and naturally derived thickeners
- Low energy systems
- Recommended use level: 2-6%
- Wide range of pH (3-9)

Applications

- Skin care
- Sun care
- Hair care
- Make-up

Selective Collateral Matrix





PolyAqual™-OS2 is a patented W/O polyglycerol-based self-emulsifier that is all naturally derived with Ecocert and Cosmos approvals. It can advantageously be used for cold-processed emulsions. **PolyAqual™-OS2** can generate W/O emulsions endowed with a very light texture and skin feel. It is compatible with silicone derivatives and enhances the emulsifying properties of other emulsifiers. It is perfectly suited for sunscreen and makeup formulations containing powders and pigments

Technical information

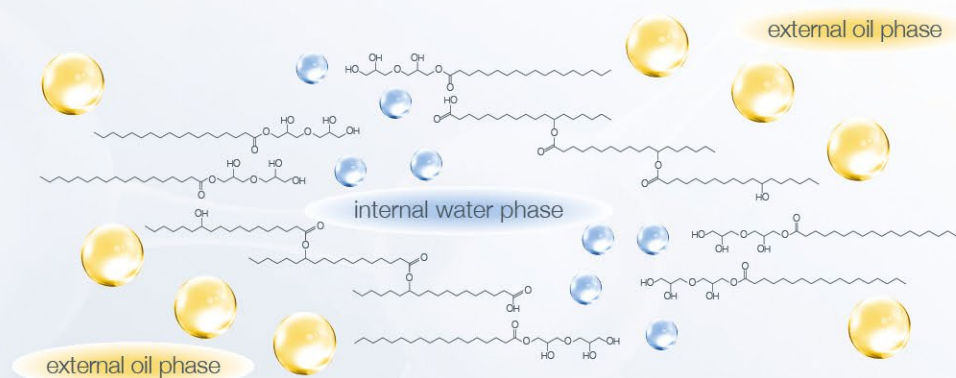
- **INCI:** Polyglyceryl-2 Oleate, Polyhydroxystearic Acid, Polyglyceryl-2 Stearate
- Cold process O/W emulsions
- Amber thick gel
- Emulsion without co-emulsifier addition
- Compatible with oils of various polarity and chemistry (vegetable oils*, esters, mineral oils, silicones**)
- Enhances silicone-emulsifier performances
- Dispersing properties for inorganic UV filters and pigments
- Unique sensorial properties
- Steric stabilization
- Environmentally friendly
- Recommended use level: 2-7%
- Wide range of pH (3-9)

Applications

- Skin care
- Sun care
- Make-up

*Maximum vegetable oil content of 30% on the total amount of oil phase

**Maximum silicones (Cyclomethicone) content of 50% on the total amount of oil phase





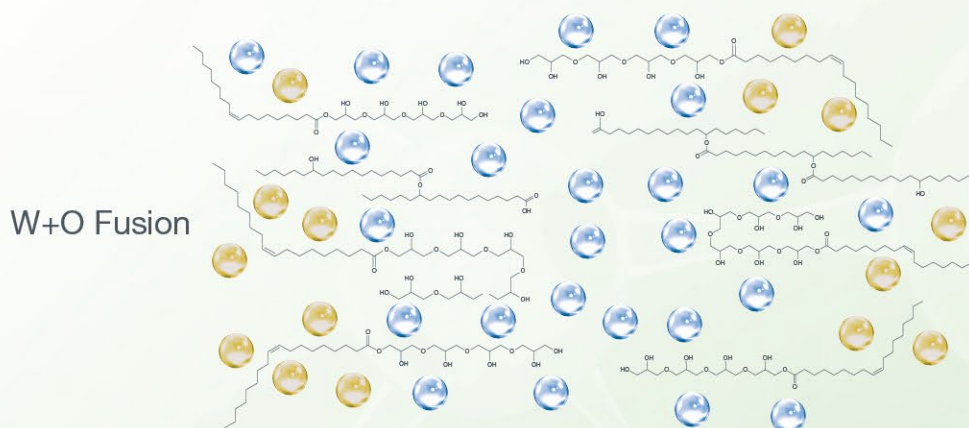
PolyAqual™-VO4 is a new, patented technology in the field of emulsions. Unlike standard emulsifiers, it literally creates a Water-and-Oil Fusion; W+O. Our W+O technology was developed based on synergistic interactions between polyglycerol derivatives of oleic acid and polyhydroxystearic acid. In addition to being completely natural as per its Cosmos certification and palm-free origin, it performs even in the presence of 100% vegetable oil. **PolyAqual™-VO4** is an easily pourable liquid that allows the formation of cold-process emulsions. Its particularity to accept more than 80% of the internal water phase brings full control to the viscosity of the final emulsion. It can create stable emulsions when used in a concentration as low as 2% and surpasses competitors in robustness and sensoriality. **PolyAqual™-VO4** is perfectly suited for sunscreen and makeup formulations containing powders and pigments.

Technical information

- **INCI:** Polyglyceryl-4 Oleate, Polyglyceryl-6 Oleate, Polyhydroxystearic Acid
- Viscous amber liquid
- Cold process W+O emulsions
- Emulsion without co-emulsifier addition
- High amount of water phase (>80%)
- Compatible with 100% vegetable oils
- Compatible with oils of various polarity and chemistry
- Superior sensorial profile and elegant texture
- Dispersing properties for inorganic UV filters and pigments
- Low energy systems
- Recommended use level: 2-7%
- Wide range of pH (3-9)

Applications

- Skin care
- Sun care
- Make-up





innollient™ LO
Of water and senses

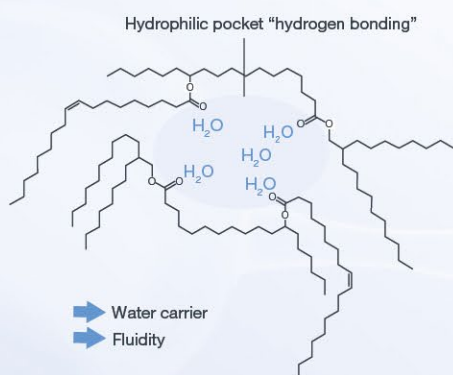
innollient™ LO is a liquid estolide (an ester linkage of one fatty acid to the hydroxyl group of a second one) mainly composed of saturated and unsaturated fatty acids displaying hydrophilic groups with high affinity for water molecules. A structural feature of **innollient™ LO** is the presence of a Guerbet derivative creating a lipophilic lateral branch. This derivative imparts fluidity and low-friction characteristics to **innollient™ LO**. The main benefits provided by **innollient™ LO** are the high spreadability, perfect dispersion of uV filter and powders and clinical benefits for the skin.

Technical information

- **INCI:** Octyldodecyl Oleate, Octyldodecyl Stearoyl Stearate, Polyhydroxystearic Acid, Octyldodecanol
- Soluble in oils
- Recommended use level: 1-10 %
- Dispersion of inorganic UV filters and pigments

Sensorial characteristics

- Natural alternative to Cyclomethicone
- Silicone-like skin feel
- Improving formulation texture, gloss
- Increase in formulation spreadability
- Long-lasting effect
- Superior emollient action



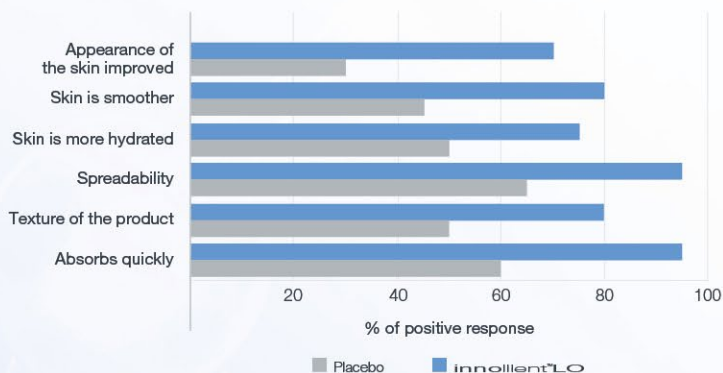
Efficacy

- Improvement of skin barrier function (TEWL)
- Increase in skin resiliency (Cutometry)

Applications

- Skin care
- Sun care
- Make-up
- Hair care

Sensorial Evaluation





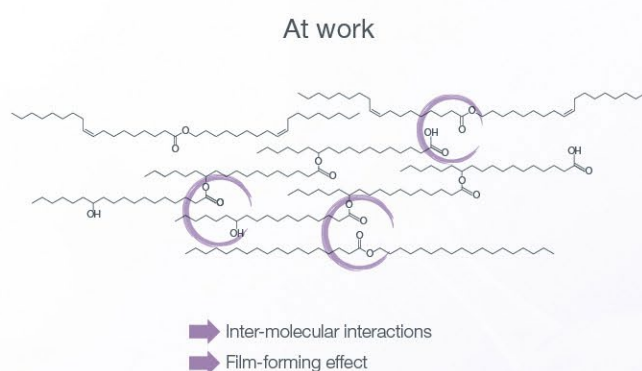
innollient™ SB is soft paste dermo-emollient, ideal for nourishing formulations intended to ensure a film-forming sensation on the skin. With a more nourishing and long-lasting effect, this product has also a higher oxidative stability index than shea butter. **innollient™ SB** improves skin barrier function increasing skin hydration and elasticity. An innovative skin feel for the beauty routine.

Technical information

- **INCI:** Stearyl Stearate, Oleyl Oleate, Polyhydroxystearic Acid
- Soluble in oils
- Recommended use level: 1-10 %

Sensorial characteristics

- Improving formulation texture, richness
- Excellent film-forming action
- Long wearing ability
- Superior emollient action
- Rich and velvety feel



Efficacy

- Improvement of skin barrier function (TEWL)
- Increase in skin resiliency (Cutometry)
- Film-forming properties

Applications

- Skin care
- Sun care
- Make-up
- Hair care





innollient™ SL
Hydrofeelm™

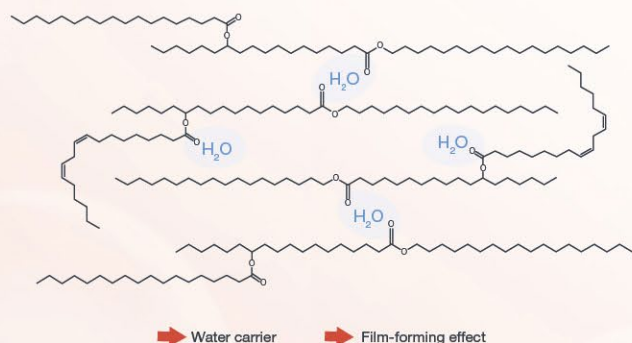
innollient™ SL is a soft wax mainly composed of soy-derived fatty acids including hydrophilic pockets interacting with water molecules through hydrogen bonding. A structural characteristic of **innollient™ SL** is the use of saturated lipophilic acyl linear chains as capping groups in the estolide assemblage. This provides excellent film forming properties to **innollient™ SL** while reinforcing inter-molecular interactions. The main benefits provided by innollient™ SL are the film-forming action and a unique emollient capacity coupled to a significant improvement of the skin barrier function.

Technical information

- **INCI:** Stearyl Linoleate, Stearyl Stearate, Polyhydroxystearic Acid, Stearyl Alcohol
- Soluble in oils
- Recommended use level: 1-10 %

Sensorial characteristics

- Film-forming action
- Superior emollient action
- Long-lasting effect (up to 8 hours)

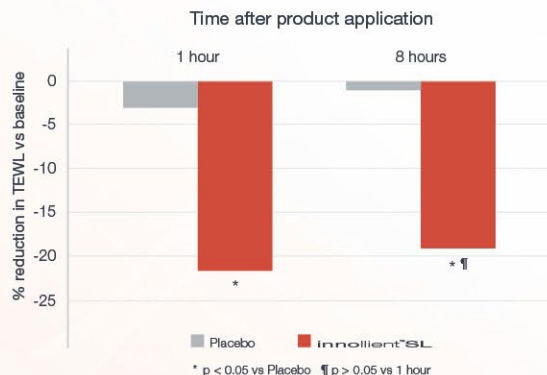


Efficacy

- Improvement of skin barrier function (TEWL)
- Increase in skin resiliency (cutometry)

Applications

- Skin care
- Sun care
- Make-up
- Hair care





Liceryl™-12 and **Eceryl™-12** are PEG-esters derived from linoleic and erucic fatty acids, respectively, and act as co-surfactants with emollient and solubilizing properties. They combine with surfactant micelles increasing their diameter to exceed that of the epidermal water channels. This action reduces skin erythema and barrier function disruption caused by surfactant penetration in the skin. **Liceryl™-12** and **Eceryl™-12** are synthesized with glycerin; an endogenous component of the skin known for its humectant properties. Linoleic acid is an unsaturated omega-6 fatty acid (18:2 ω -6) and prevalent in soybean oil (*Glycine max*). Erucic acid is a monounsaturated omega-9 fatty acid (22:1 ω -9) found in rapeseed oil (*Brassica napus*).

Technical information

- **INCI Liceryl™-12:** Stearyl Linoleate, Stearyl Stearate, Polyhydroxystearic Acid, Stearyl Alcohol
- **INCI Eceryl™-12:** Glyceryl Erucate, PEG-12 Oleate
- Soluble in water
- Dispersible in oils
- Solubilizing properties for fragrances and essential oils
- Recommended use level: 1-10%

Efficacy

- Increase the average diameter of SDS-micelles
- Prevent SDS-induced damages to the barrier function
- Reduce SDS-induced skin erythema

Applications

- Facial cleansers
- Body wash
- Shampoos
- Make-up removers
- Baby care
- Sensitive skin treatments

Formulation applications		Liceryl™-12	Eceryl™-12	Functions
Toiletries	Shampoos	+++	+++	Co-surfactants, Aesthetic Foam Improver, Emollient, Anti-irritant
	Body wash toiletries	+++	+++	
Clear Systems	Clear toner lotions	+++	+	Emollient Agents in hydrophilic systems and Solubility Promoters
	Make up remover	+++	+	
	Clear Gel	+++	+	
Emulsions	Hair conditioners and masks	++	+++	Emollient Agents, Co-emulsifiers and Cleansing Agent
	Body lotions and creams	++	+++	
	Cleansing creams	++	+++	



Innovacos corp.

111 Howard Blvd. Suite 160
Mt. Arlington, New Jersey 07856

www.innovacos.com

info@innovacos.com